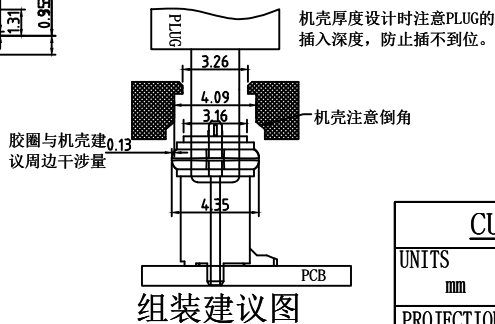


RECOMMENDED PCB LAYOUT (TOP VIEW)
DEFAULT TOLERANCE: ±0.05



组装建议图

USB TYPE-C PIN ASSIGNMENTS

PIN NUMBER	SIGNAL NAME	PIN NUMBER	SIGNAL NAME
A1	GND	B12	GND
A4	V BUS	B9	V BUS
A5	CC1	B8	SBU2
A6	Dp1	B7	Dn2
A7	Dn1	B6	Dp2
A8	SBU1	B5	CC2
A9	V BUS	B4	V BUS
A12	GND	B1	GND

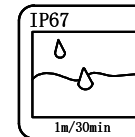
REV	DESCRIPTION	DATE	APPROVED
A	新版发行	2020. 11. 06	HHM

1. MATERIAL SPECIFICATION:

- 1. 1. HOUSING: HIGH TEMPERATURE RESISTANT PLASTIC, UL94 V-0.
- 1. 2. CONTACTS: COPPER ALLOY
- 1. 3. MID PLATE: STAINLESS STEEL
- 1. 4. FRONT SHELL: STAINLESS STEEL

2. MECHANICAL PERFORMANCE,

- 2. 1. INSERTION FORCE: 5~20N.
- 2. 2. REMOVAL FORCE: 6~20N.
- 2. 3. DURABILITY: 10000 CYCLES.



3. ELECTRICAL PERFORMANCE,

- 3. 1. CURRENT RATING: 3.0A
VOLTAGE RATING: 12V
- 3. 2. LLCR:
VBUS & GND PINS AND OTHER PINS: 40mΩ /PIN MAX.
SHIELD: 50mΩ /MAX.
- 3. 3. INSULATION RESISTANCE: 100MΩ MIN
- 3. 4. DIELECTRIC WITHSTAND VOLTAGE, AC 100V FOR 1 MINUTE.

4. ENVIRONMENTAL PERFORMANCE:

- OPERATING TEMPERATURE: -25° C~+85° C.
- 5. IR REFLOW:
THE PEAK TEMPERATURE ON THE BOARD SHALL BE MAINTAINED FOR 10 SECONDS AT 260° C.

NO.	DESCRIPTION	MATERIAL	REMARKS	QTY
6	SHIELDING PLATE	STAINLESS STEEL		1PCS
5	Epoxy		BLACK	
4	O RING	SILICA GEL	White	1PCS
3	CONTACT	COPPER ALLOY	AU On Contact Area And Solder Tail Area, All over Nickel Plated	16SET
2	SHELL	zinc alloy	NI Plated	1PCS
1	HOUSING	HIGH TEMPERATURE PLASTIC	BLACK	1PCS

CUSTOMER DRAWING

UNITS mm	SCALE 1:1	SHEET 1 OF 1
PROJECTION: 	DRAW: DAP	CHECK: HWT
GENERAL TOLERANCE .000 ±0.02 .00 ±0.10 .0 ±0.20 .0 ±2° .00 ±1°	APPD: HHM	

铭创科技（东莞）有限公司
Mingchuang Technology (Dongguan) Co., Ltd.

TITLE
防水TYPE C母座16PIN 立式两脚插板SMT L=6.5 舌片外露 带贴板脚 锌合金

MAT'L SEE TABLE	FINISH SEE TABLE
DWG. NO. B09W1609A	PART NO. _____ SIZE A4